

# Neuchâtel Full Bond System Standard Detail Drawings

Document Version: 001

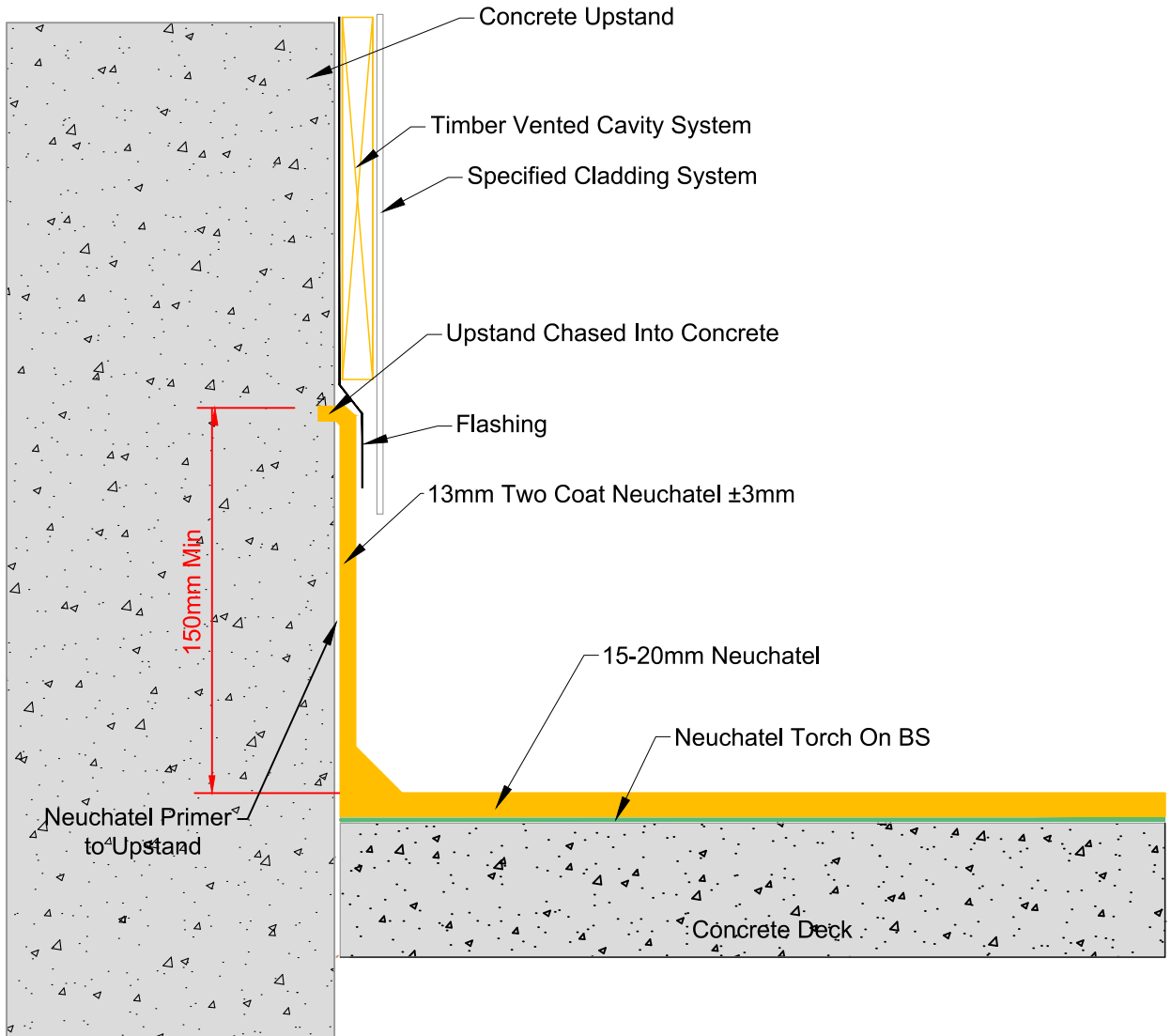
Issue Date: October 2023



# Index

Reference No.	Issue Date	Version No.	Description
FBS 001	Oct 2023	Rev1	Upstand Detail   Standard Detail
FBS 001B	Oct 2023	Rev1	Upstand to Cavity Wall Detail   Standard Detail
FBS 001C	Oct 2023	Rev1	Upstand to Cavity Wall Detail   Standard Detail
FBS 001D	Oct 2023	Rev1	Rendered Upstand Detail   Standard Detail
FBS 002	Oct 2023	Rev1	Torch-On Upstand Detail   Standard Detail
FBS 003	Oct 2023	Rev1	Cast Concrete Upstand Detail   Standard Detail
FBS 004	Oct 2023	Rev1	Threshold Upstand Detail - Flush Details   Standard Detail
FBS 004B	Oct 2023	Rev1	Threshold Upstand Detail - Rebated Details   Standard Detail
FBS 005	Oct 2023	Rev1	Parapet Outlet Detail   Standard Detail
FBS 005A	Oct 2023	Rev1	Scupper Outlet Detail   Standard Detail
FBS 006	Oct 2023	Rev1	Outlet Detail   Standard Detail
FBS 007	Oct 2023	Rev1	Cast Concrete Parapet with Cap Flashing   Std Detail
FBS 008	Oct 2023	Rev1	Change of Level Detail   Standard Detail
FBS 009	Oct 2023	Rev1	Typical Tanking Interface Detail
FBS 009B	Oct 2023	Rev1	Mastic Tanking Interface Detail
FBS 010	Oct 2023	Rev1	Gutter Drip Edge Detail   Standard Detail
FBS 011	Oct 2023	Rev1	Downpipe Penetration   Standard Detail
FBS 011B	Oct 2023	Rev1	'Hockey Stick' Pipe Penetration Detail   Std Detail
FBS 012	Oct 2023	Rev1	Fall Restraint Plinth Mount Detail   Standard Detail
FBS 013	Oct 2023	Rev1	Plant Room Plinth Detail Standard Detail
FBS 014	Oct 2023	Rev1	Top Mounted Balustrade Detail   Standard Detail
FBS 014B	Oct 2023	Rev1	Side Mounted Balustrade Detail   Standard Detail
FBS 015	Oct 2023	Rev1	Stair Support Detail   Standard Detail





**masterspec**

TITLE: **UPSTAND DETAIL  
STANDARD DETAIL**

**FULL BOND SYSTEM**

Drawing: FBS 001 Rev1

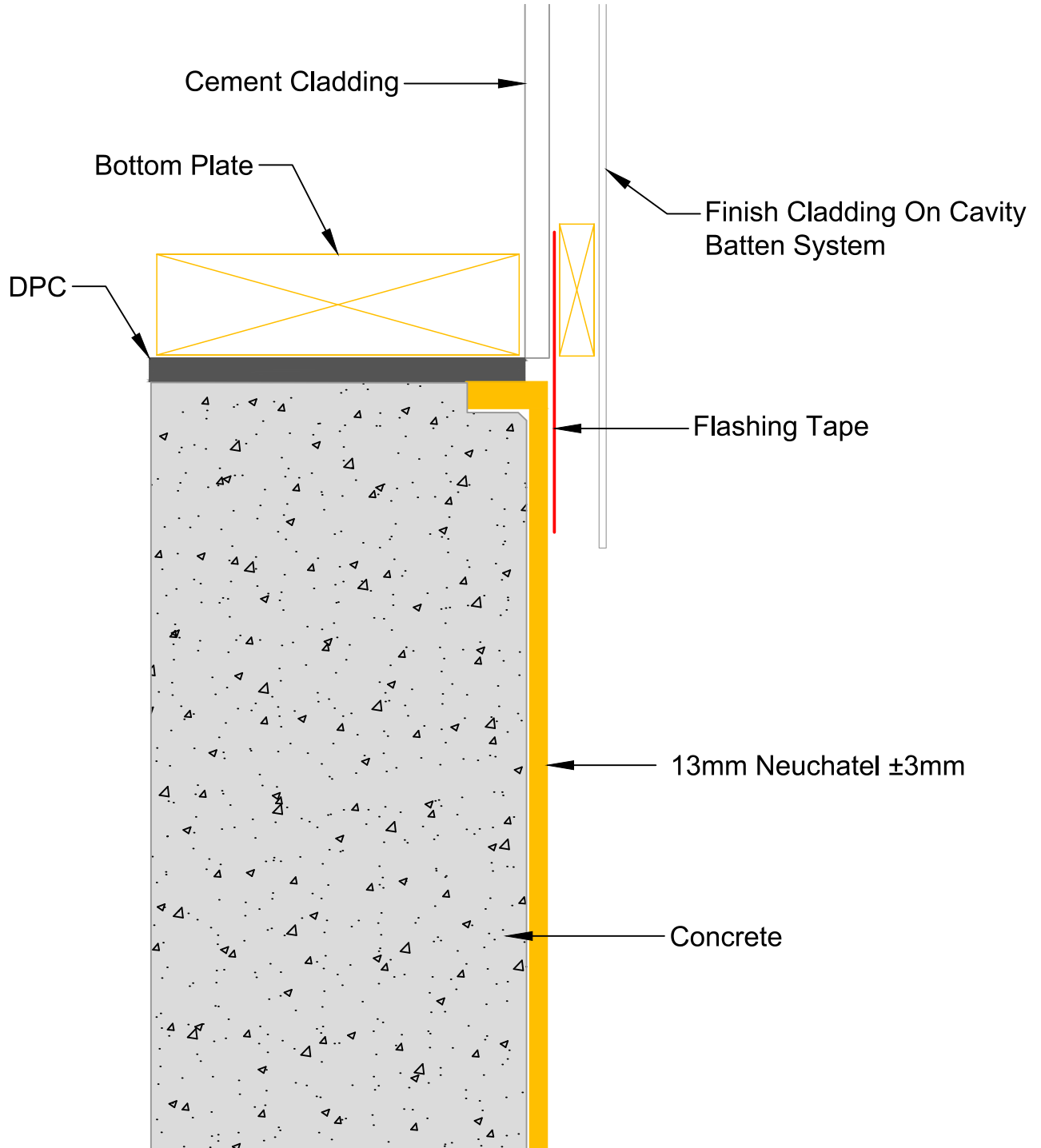
OCT 2023

Not to Scale

[www.neuchatel.co.nz](http://www.neuchatel.co.nz)

TECHNICAL SERVICES.  
Tel: 09 441 4595  
email: info@neuchatel.co.nz

Drawing is indicative only and subject to approval for use in the application required.



**masterspec**

TITLE: **UPSTAND TO CAVITY WALL DETAIL  
STANDARD DETAIL**

**FULL BOND SYSTEM**

[www.neuchatel.co.nz](http://www.neuchatel.co.nz)

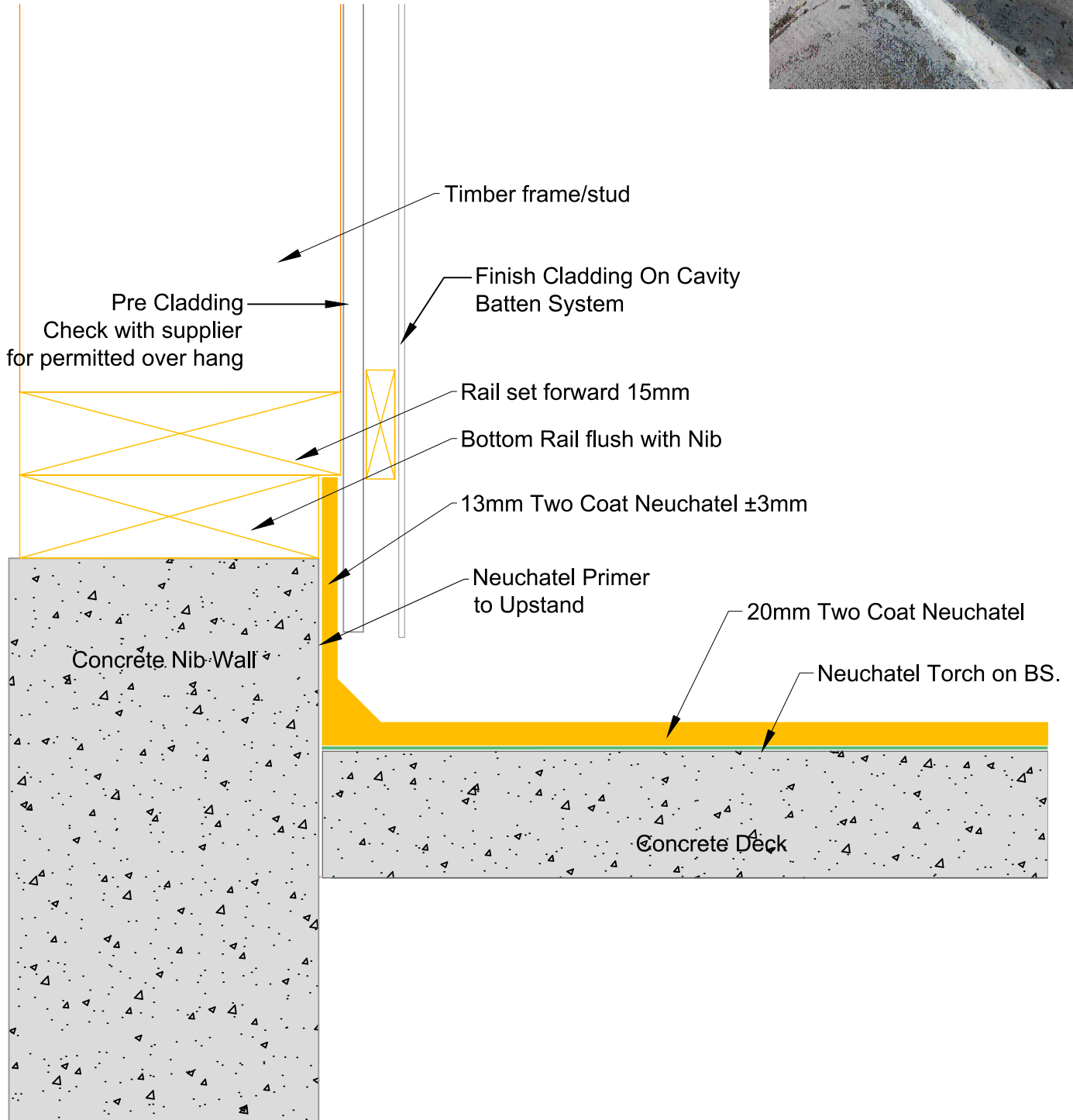
TECHNICAL SERVICES.  
Tel: 09 441 4595  
email: info@neuchatel.co.nz

Drawing: FBS 001B Rev1

OCT 2023

Not to Scale

Drawing is indicative only and subject to approval for use in the application required.



**masterspec**

TITLE: **UPSTAND TO CAVITY WALL DETAIL  
STANDARD DETAIL**

**FULL BOND SYSTEM**

Drawing: FBS 001C Rev1

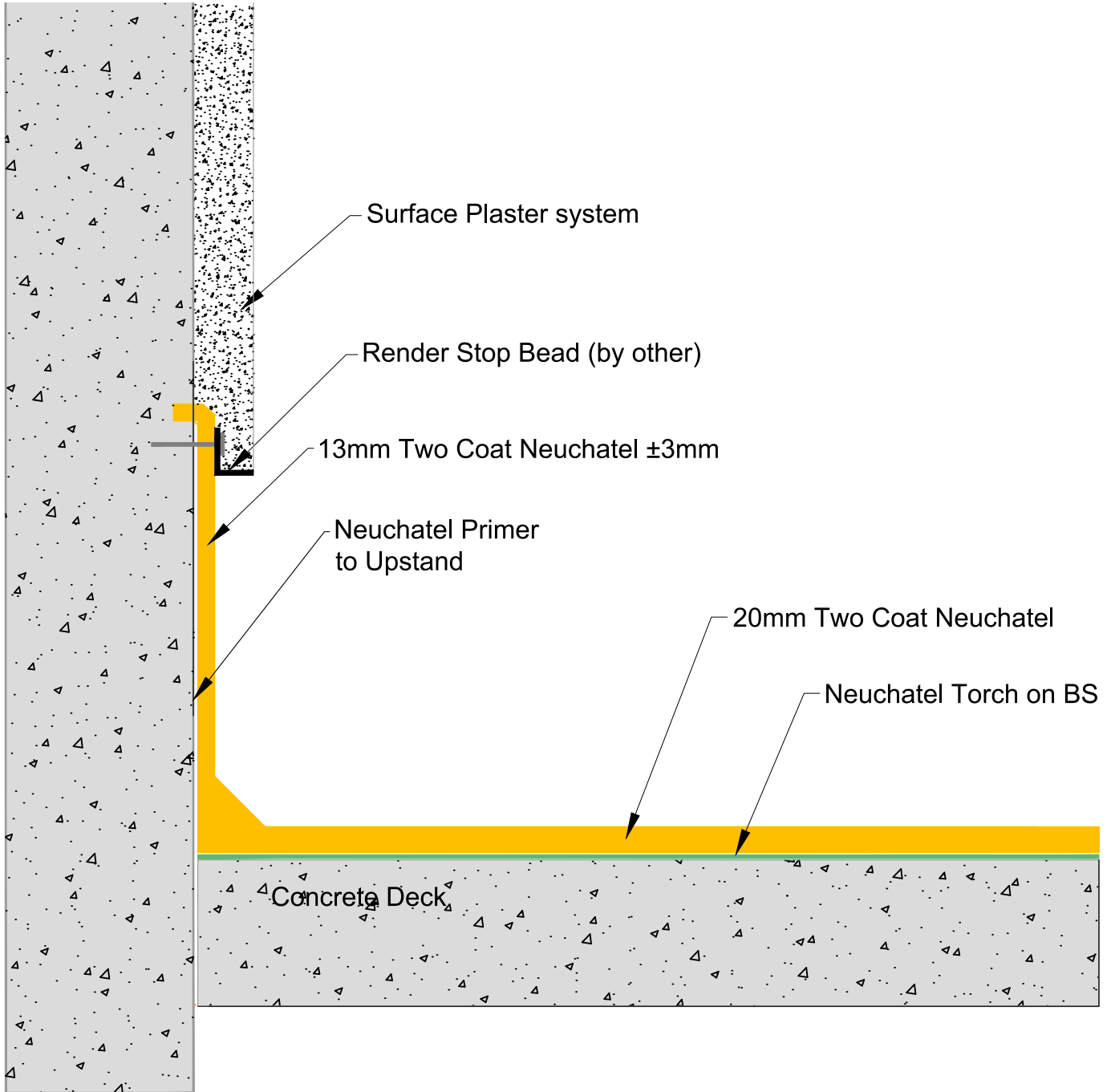
OCT 2023

Not to Scale

[www.neuchatel.co.nz](http://www.neuchatel.co.nz)

TECHNICAL SERVICES.  
Tel: 09 441 4595  
email: info@neuchatel.co.nz

Drawing is indicative only and subject to approval for use in the application required.



**masterspec**

TITLE: **RENDERED UPSTAND DETAIL  
STANDARD DETAIL**

**FULL BOND SYSTEM**

Drawing: FBS 001D Rev1

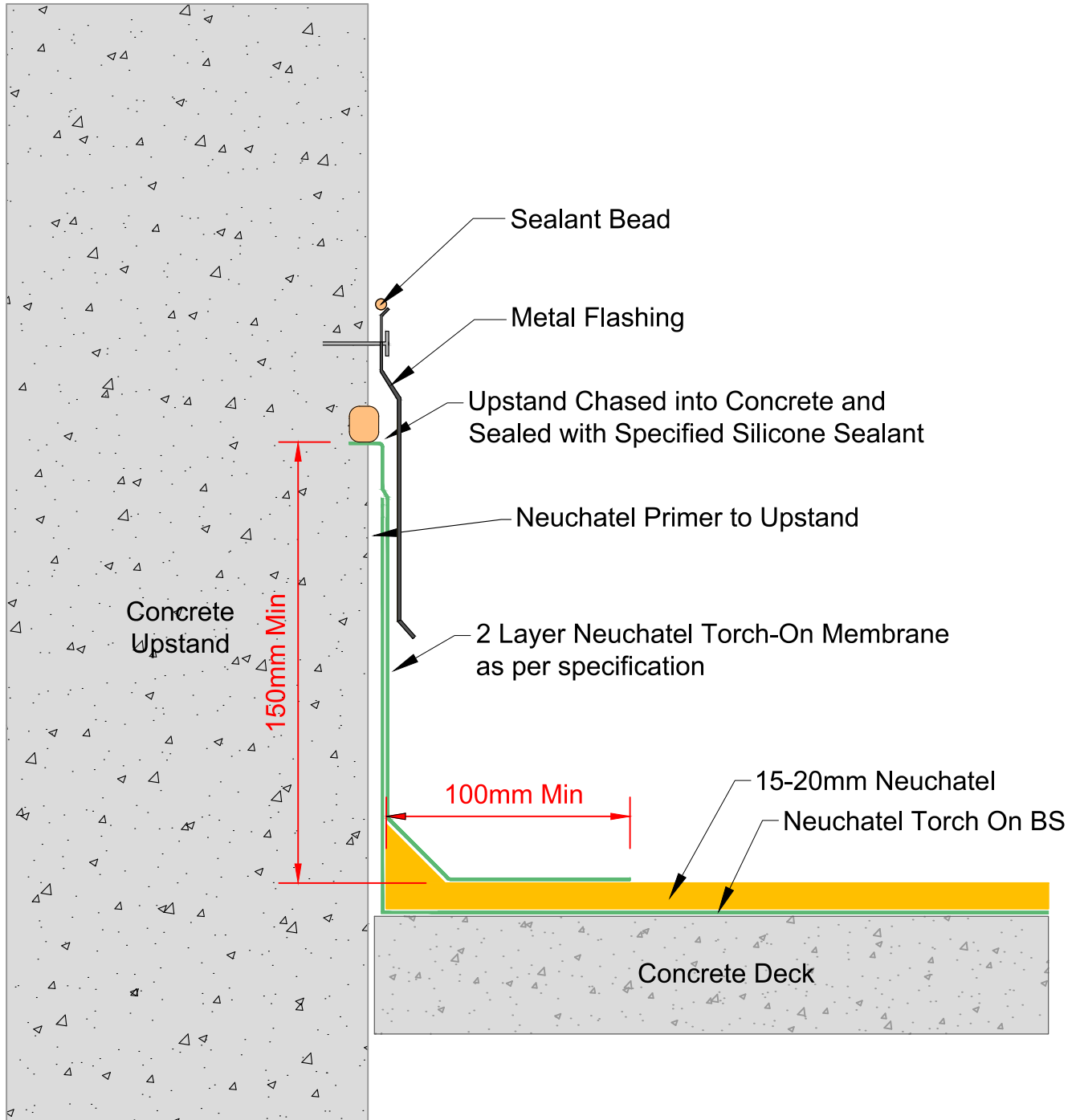
OCT 2023

Not to Scale

[www.neuchatel.co.nz](http://www.neuchatel.co.nz)

TECHNICAL SERVICES.  
Tel: 09 441 4595  
email: info@neuchatel.co.nz

Drawing is indicative only and subject to approval for use in the application required.



**masterspec**

TITLE: TORCH-ON UPSTAND DETAIL  
STANDARD DETAIL

FULL BOND SYSTEM

Drawing: FBS 002 Rev1

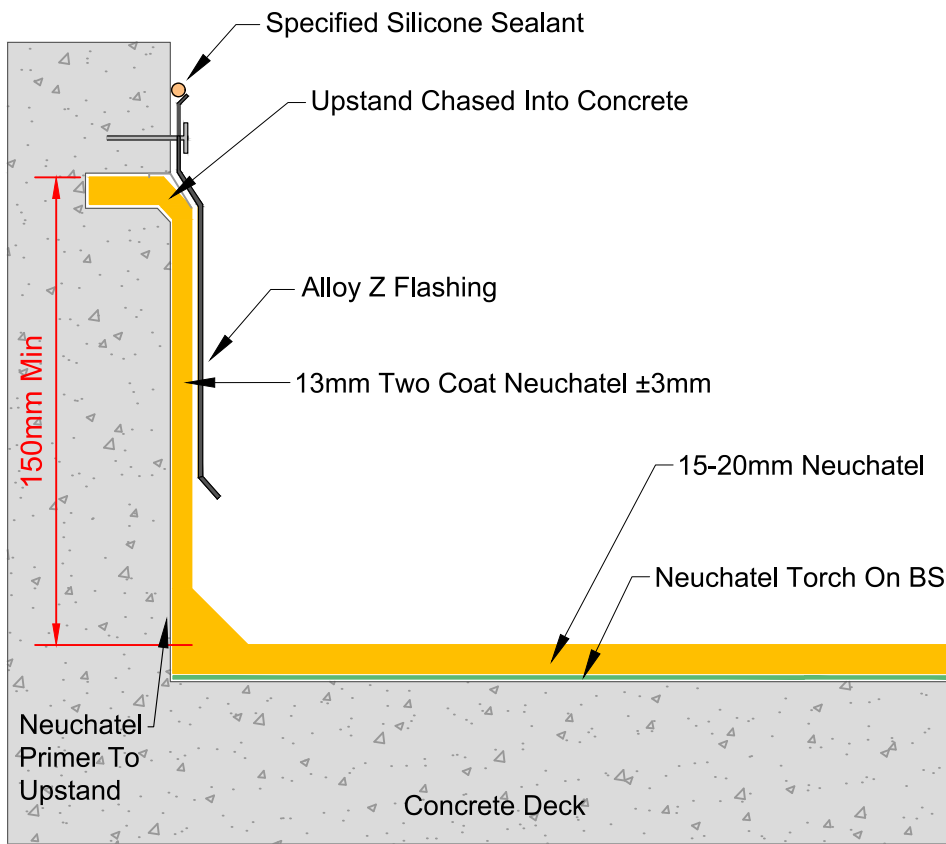
OCT 2023

Not to Scale

[www.neuchatel.co.nz](http://www.neuchatel.co.nz)

TECHNICAL SERVICES.  
Tel: 09 441 4595  
email: info@neuchatel.co.nz

Drawing is indicative only and subject to approval for use in the application required.



**masterspec**

TITLE: **CAST CONCRETE UPSTAND DETAIL  
STANDARD DETAIL**

**FULL BOND SYSTEM**

Drawing: FBS 003 Rev1

OCT 2023

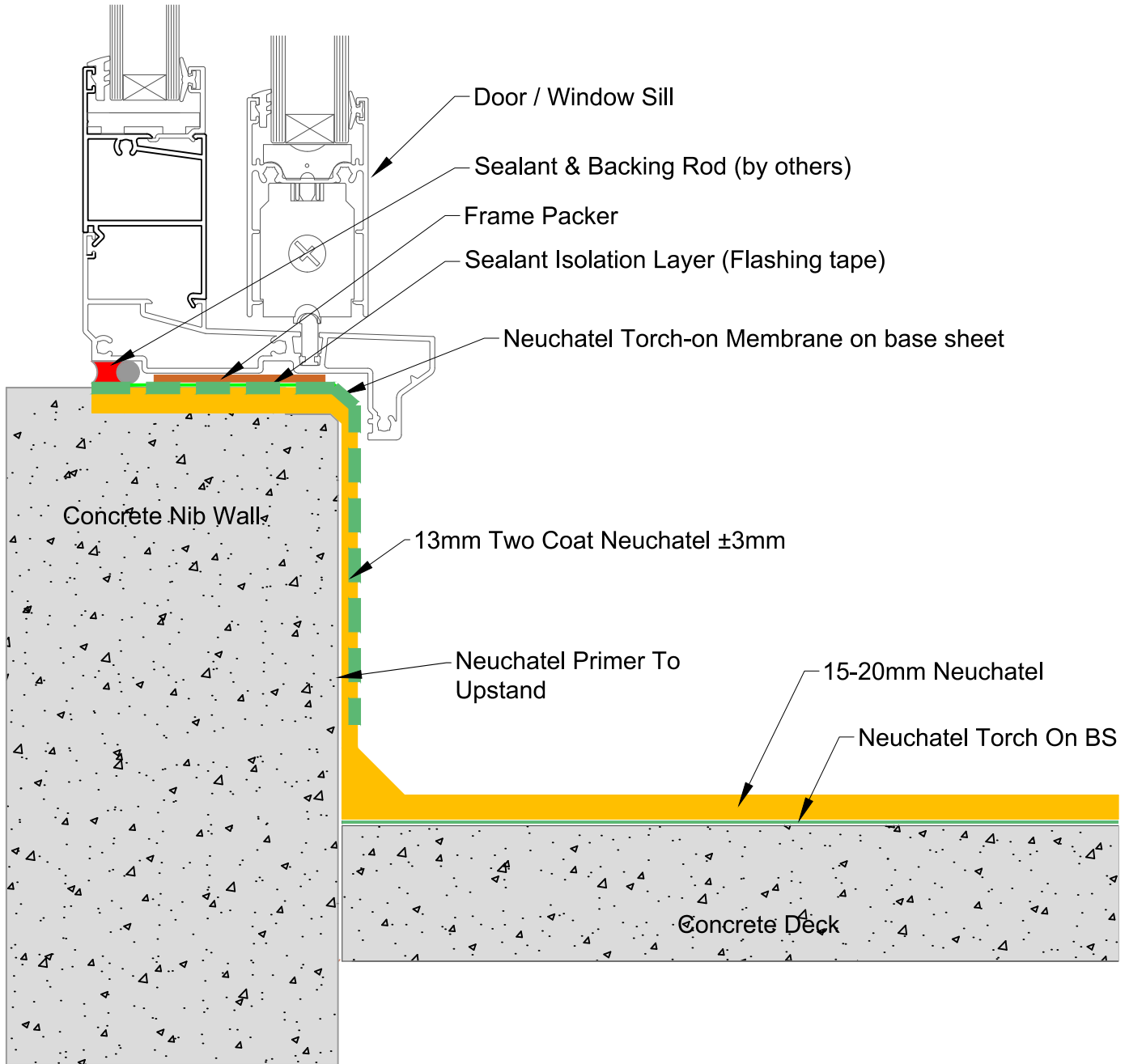
Not to Scale

[www.neuchatel.co.nz](http://www.neuchatel.co.nz)

TECHNICAL SERVICES.  
Tel: 09 441 4595  
email: info@neuchatel.co.nz

Drawing is indicative only and subject to approval for use in the application required.





**masterspec**

TITLE: **THRESHOLD UPSTAND DETAIL - FLUSH DETAILS  
STANDARD DETAIL**

**FULL BOND SYSTEM**

Drawing: FBS 004 Rev1

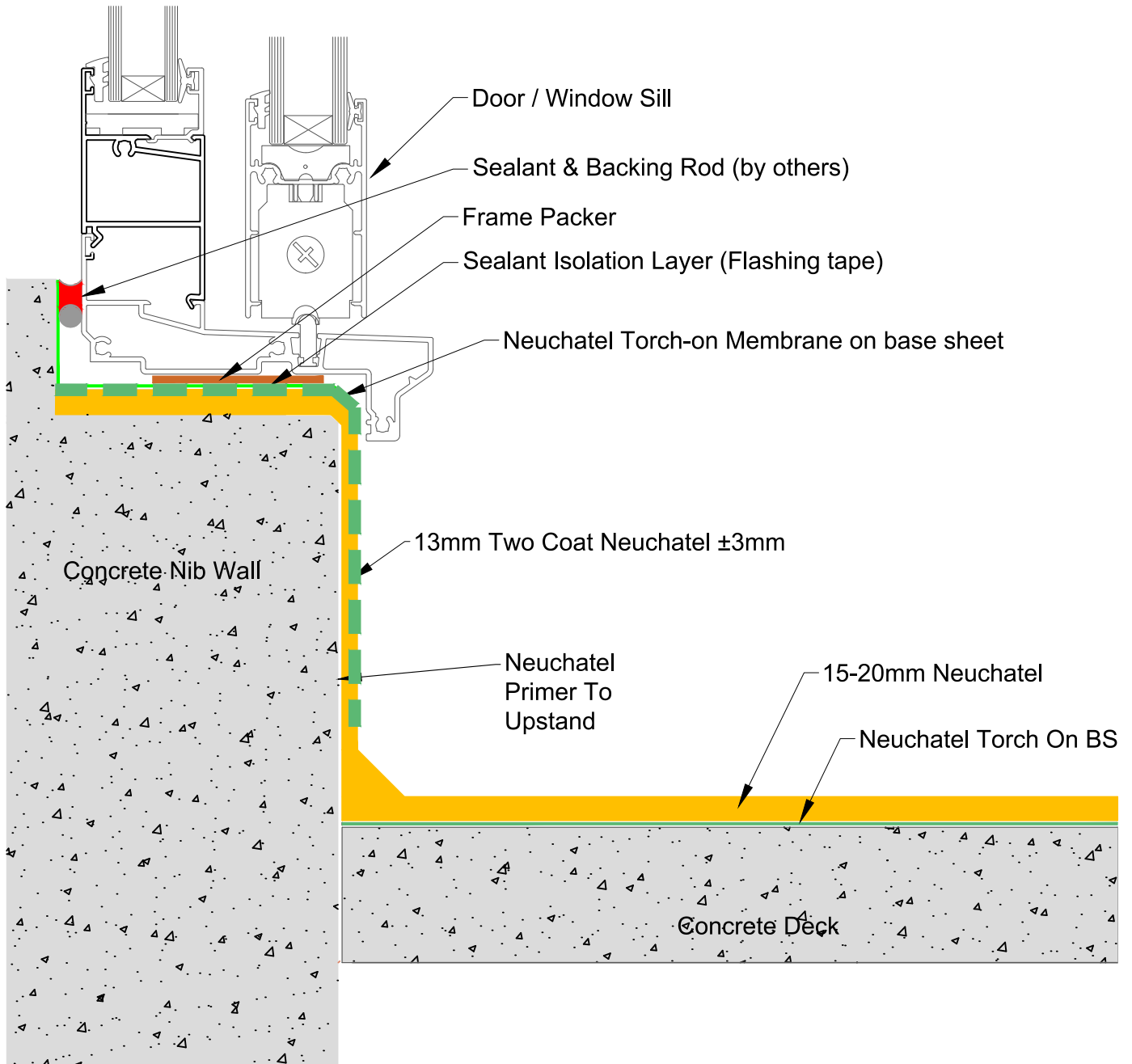
OCT 2023

Not to Scale

[www.neuchatel.co.nz](http://www.neuchatel.co.nz)

TECHNICAL SERVICES.  
Tel: 09 441 4595  
email: info@neuchatel.co.nz

Drawing is indicative only and subject to approval for use in the application required.



masterspec

TITLE: **THRESHOLD UPSTAND DETAIL - REBATED DETAILS  
STANDARD DETAIL**

**FULL BOND SYSTEM**

Drawing: FBS 004B Rev1

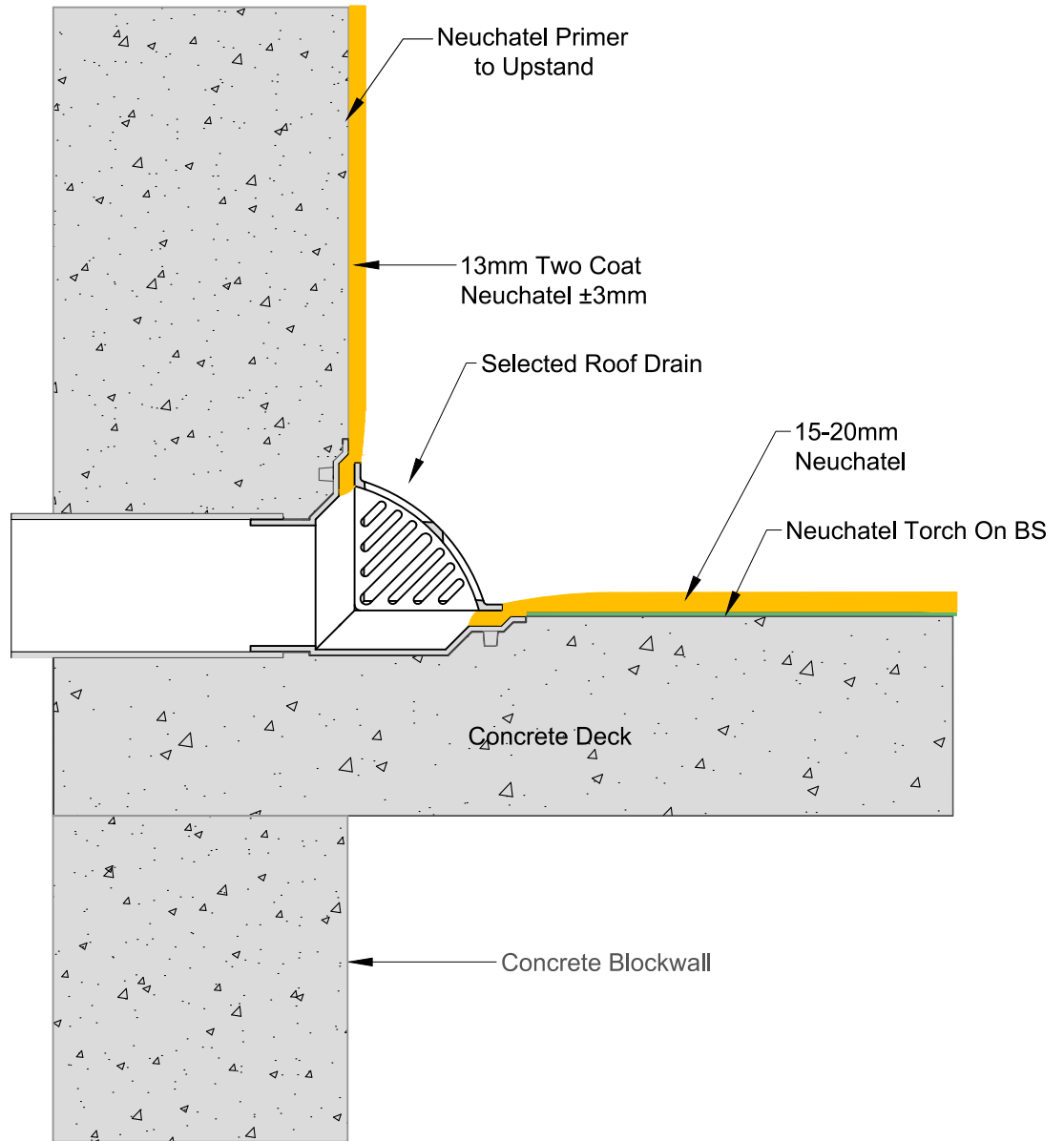
OCT 2023

Not to Scale

[www.neuchatel.co.nz](http://www.neuchatel.co.nz)

TECHNICAL SERVICES.  
Tel: 09 441 4595  
email: info@neuchatel.co.nz

Drawing is indicative only and subject to approval for use in the application required.



**masterspec**

TITLE: **PARAPET OUTLET DETAIL  
STANDARD DETAIL**

**FULL BOND SYSTEM**

Drawing: FBS 005 Rev1

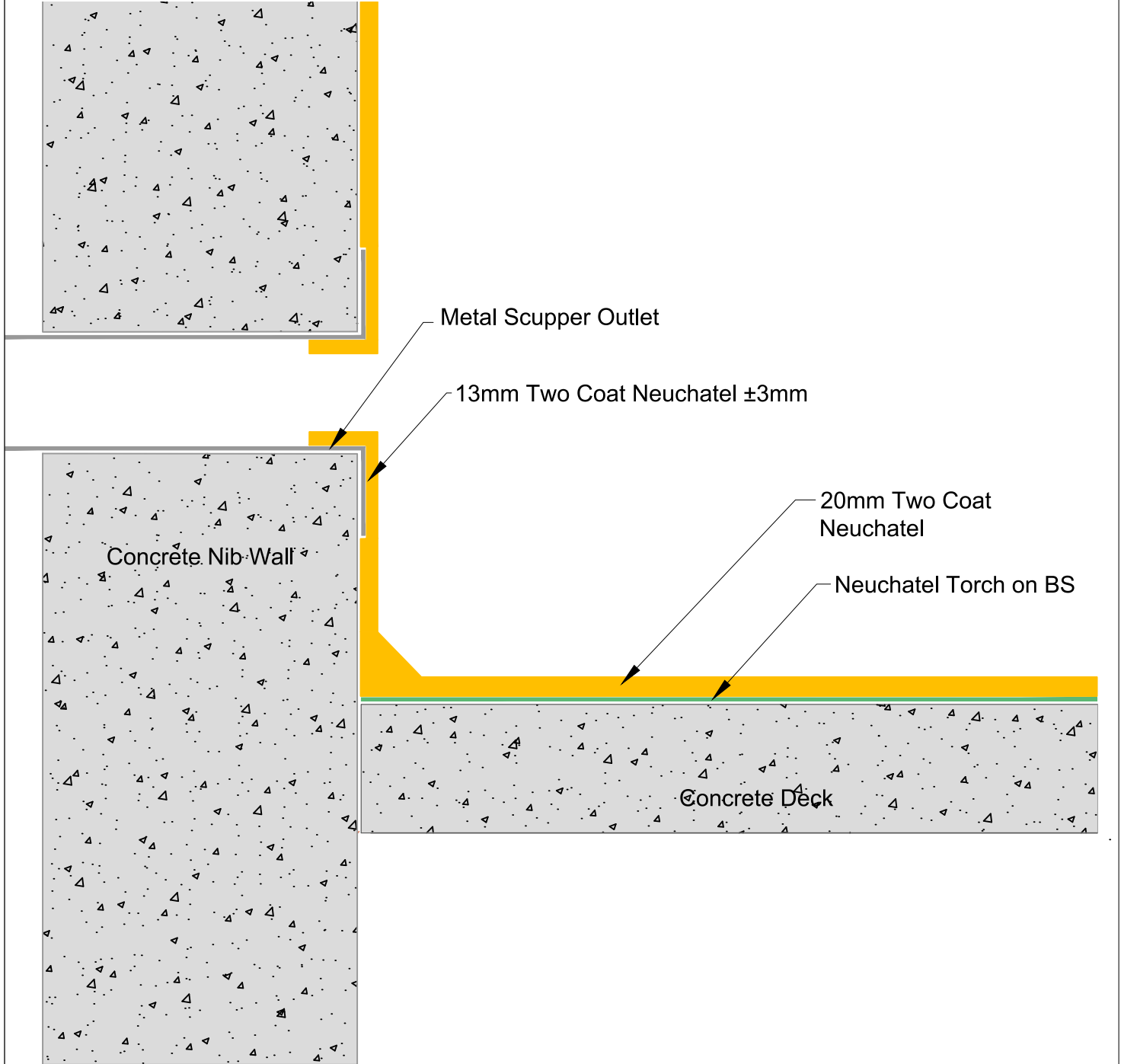
OCT 2023

Not to Scale

[www.neuchatel.co.nz](http://www.neuchatel.co.nz)

TECHNICAL SERVICES.  
Tel: 09 441 4595  
email: info@neuchatel.co.nz

Drawing is indicative only and subject to approval for use in the application required.



**masterspec**

TITLE: **SCUPPER OUTLET DETAIL  
STANDARD DETAIL**

**FULL BOND SYSTEM**

Drawing: FBS 005A Rev1

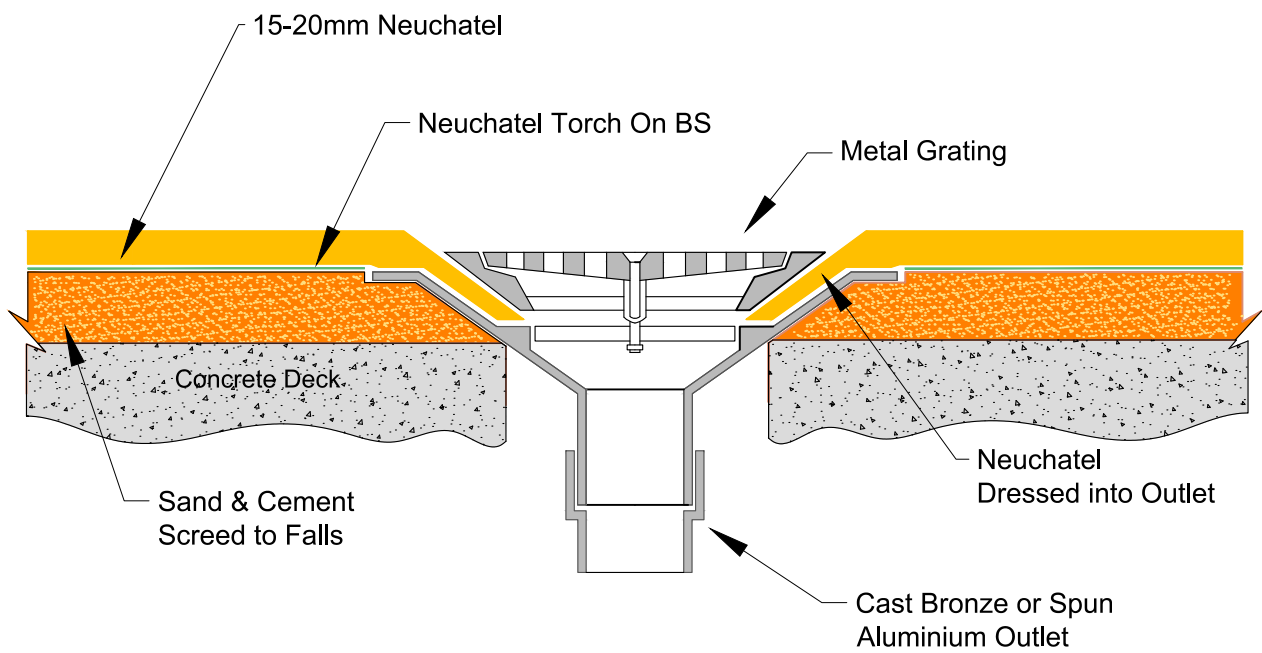
OCT 2023

Not to Scale

[www.neuchatel.co.nz](http://www.neuchatel.co.nz)

TECHNICAL SERVICES.  
Tel: 09 441 4595  
email: info@neuchatel.co.nz

Drawing is indicative only and subject to approval for use in the application required.



**masterspec**

**OUTLET DETAIL  
STANDARD DETAIL**

**FULL BOND SYSTEM**

[www.neuchatel.co.nz](http://www.neuchatel.co.nz)

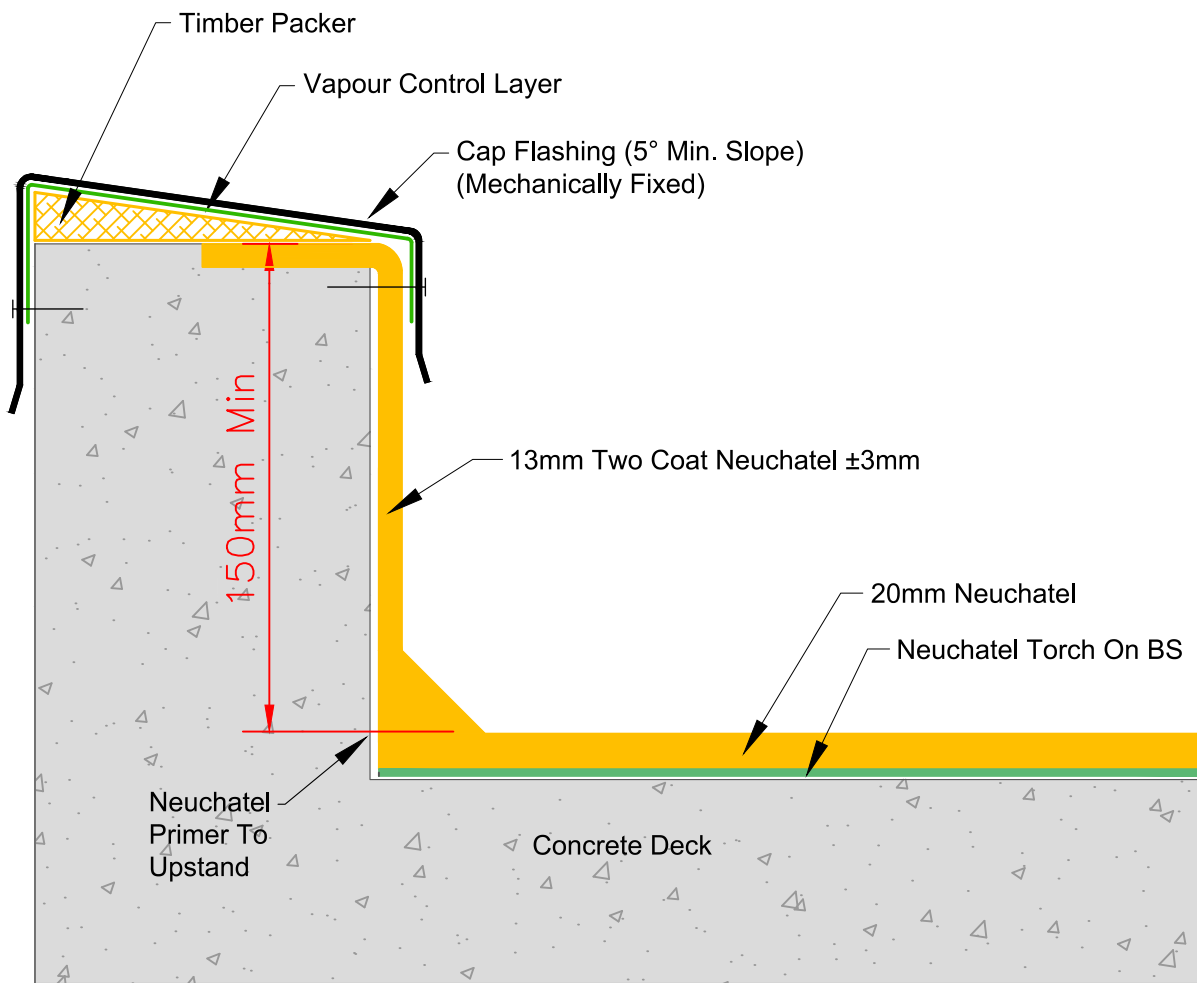
TECHNICAL SERVICES.  
Tel: 09 441 4595  
email: info@neuchatel.co.nz

Drawing: FBS 006 Rev1

OCT 2023

Not to Scale

Drawing is indicative only and subject to approval for use in the application required.



**masterspec**

TITLE: **CAST CONCRETE PARAPET WITH CAP FLASHING  
STANDARD DETAIL**

**FULL BOND SYSTEM**

Drawing: FBS 007 Rev1

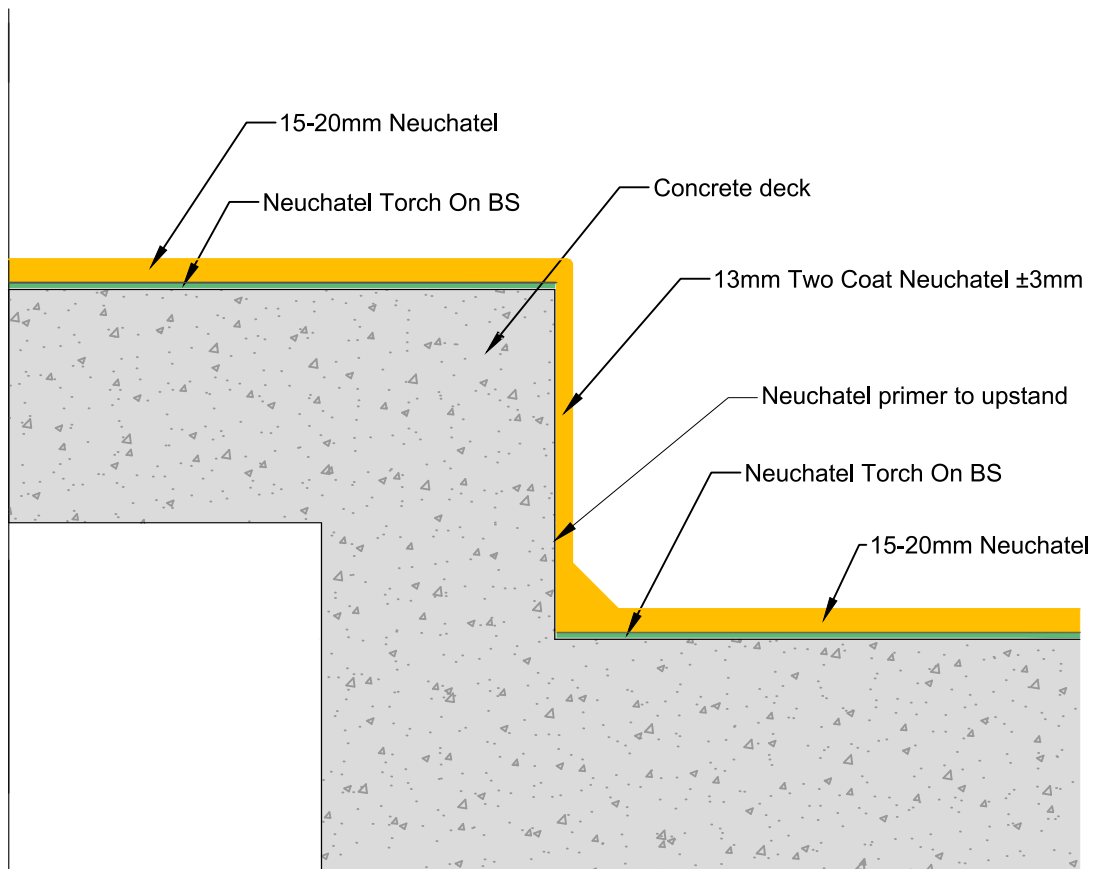
OCT 2023

Not to Scale

[www.neuchatel.co.nz](http://www.neuchatel.co.nz)

TECHNICAL SERVICES.  
Tel: 09 441 4595  
email: info@neuchatel.co.nz

Drawing is indicative only and subject to approval for use in the application required.



**masterspec**

TITLE: **CHANGE OF LEVEL DETAIL  
STANDARD DETAIL**

**FULL BOND SYSTEM**

[www.neuchatel.co.nz](http://www.neuchatel.co.nz)

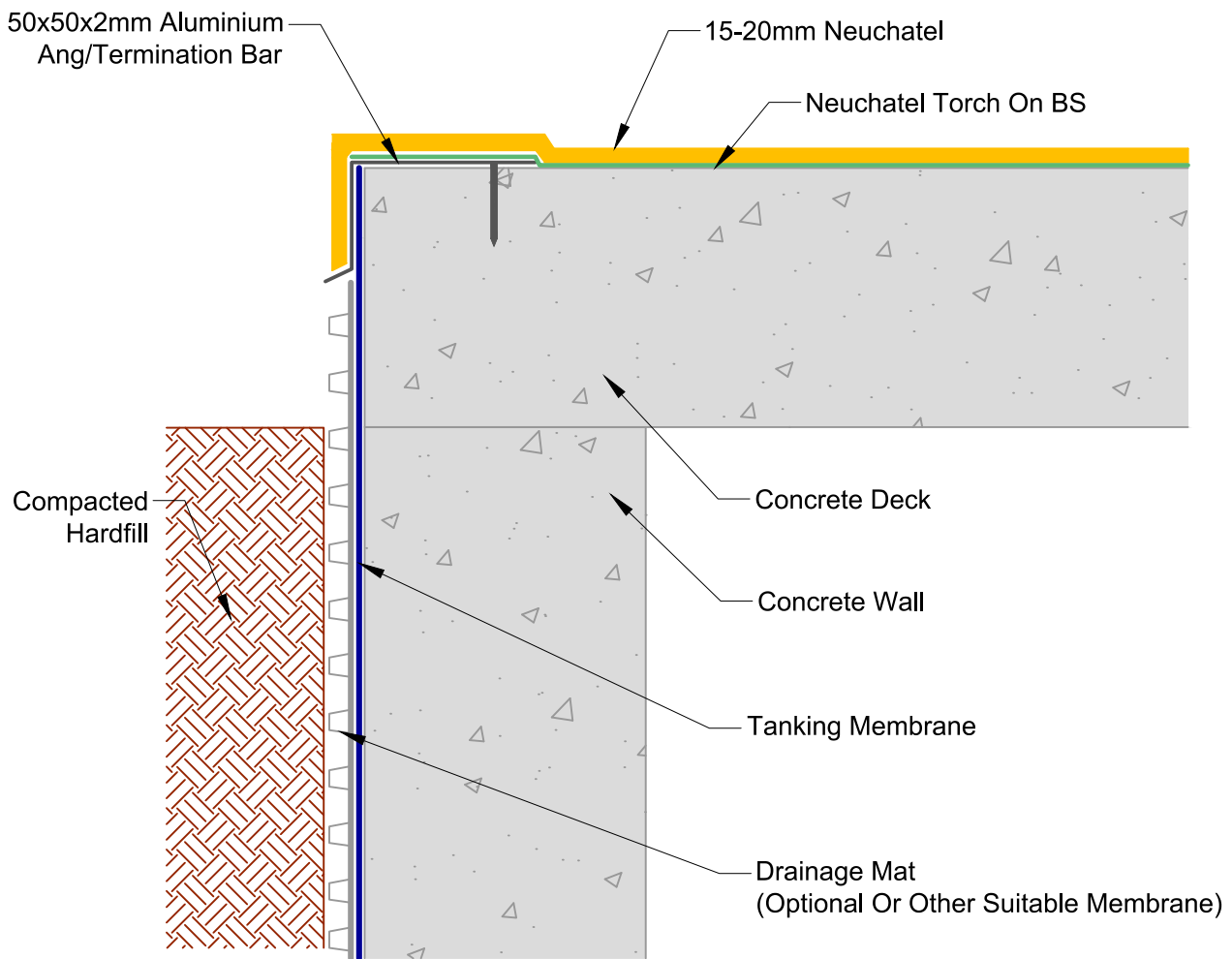
TECHNICAL SERVICES.  
Tel: 09 441 4595  
email: info@neuchatel.co.nz

Drawing: FBS 008 Rev1

OCT 2023

Not to Scale

Drawing is indicative only and subject to approval for use in the application required.



**masterspec**

**TYPICAL TANKING  
INTERFACE DETAIL**

**FULL BOND SYSTEM**

[www.neuchatel.co.nz](http://www.neuchatel.co.nz)

TECHNICAL SERVICES.  
Tel: 09 441 4595  
email: info@neuchatel.co.nz

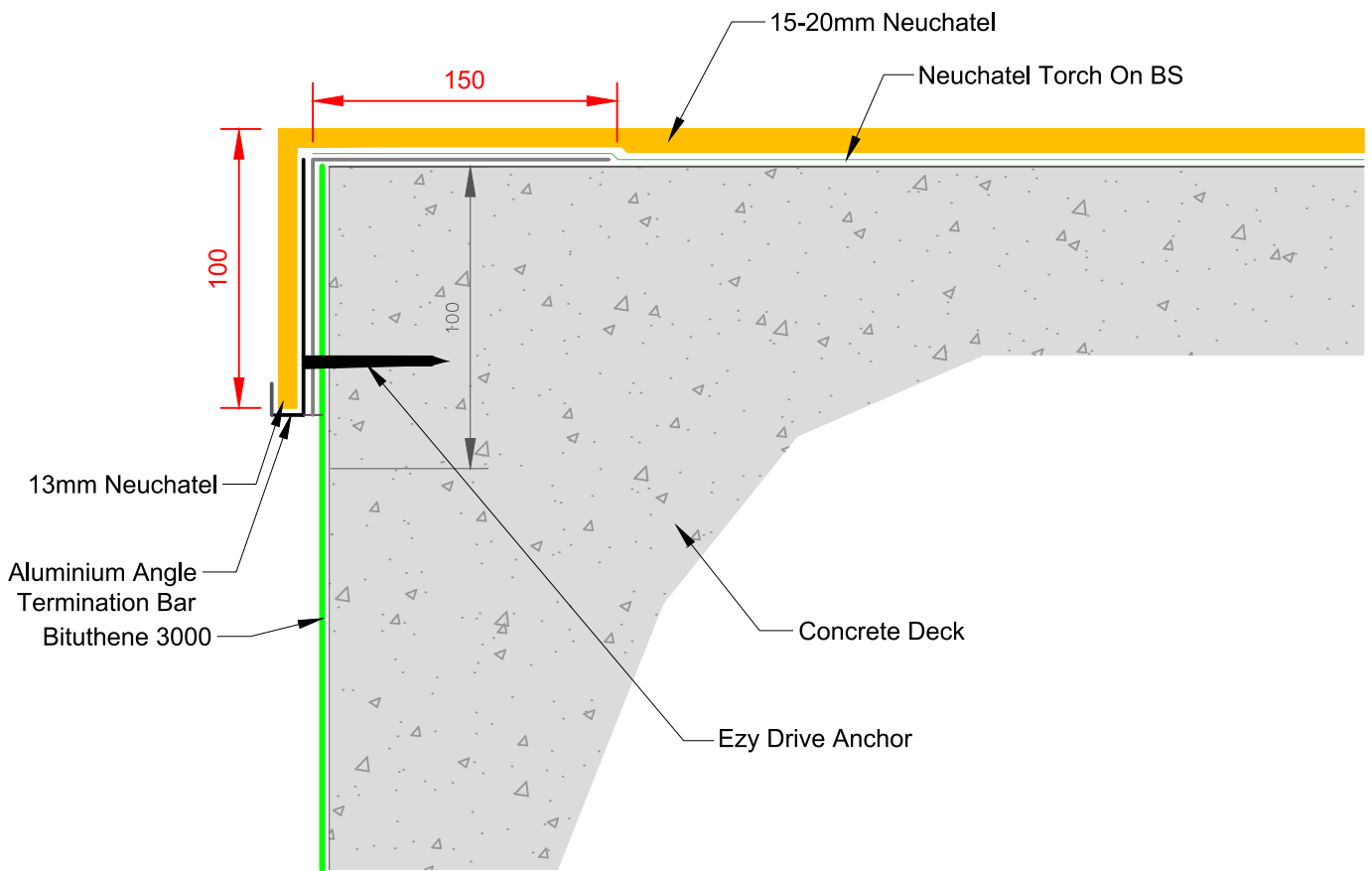
Drawing: FBS 009 Rev1

OCT 2023

Not to Scale

Drawing is indicative only and subject to approval for use in the application required.





**masterspec**

TITLE: **MASTIC TANKING INTERFACE DETAIL  
STANDARD DETAIL**

**FULL BOND SYSTEM**

[www.neuchatel.co.nz](http://www.neuchatel.co.nz)

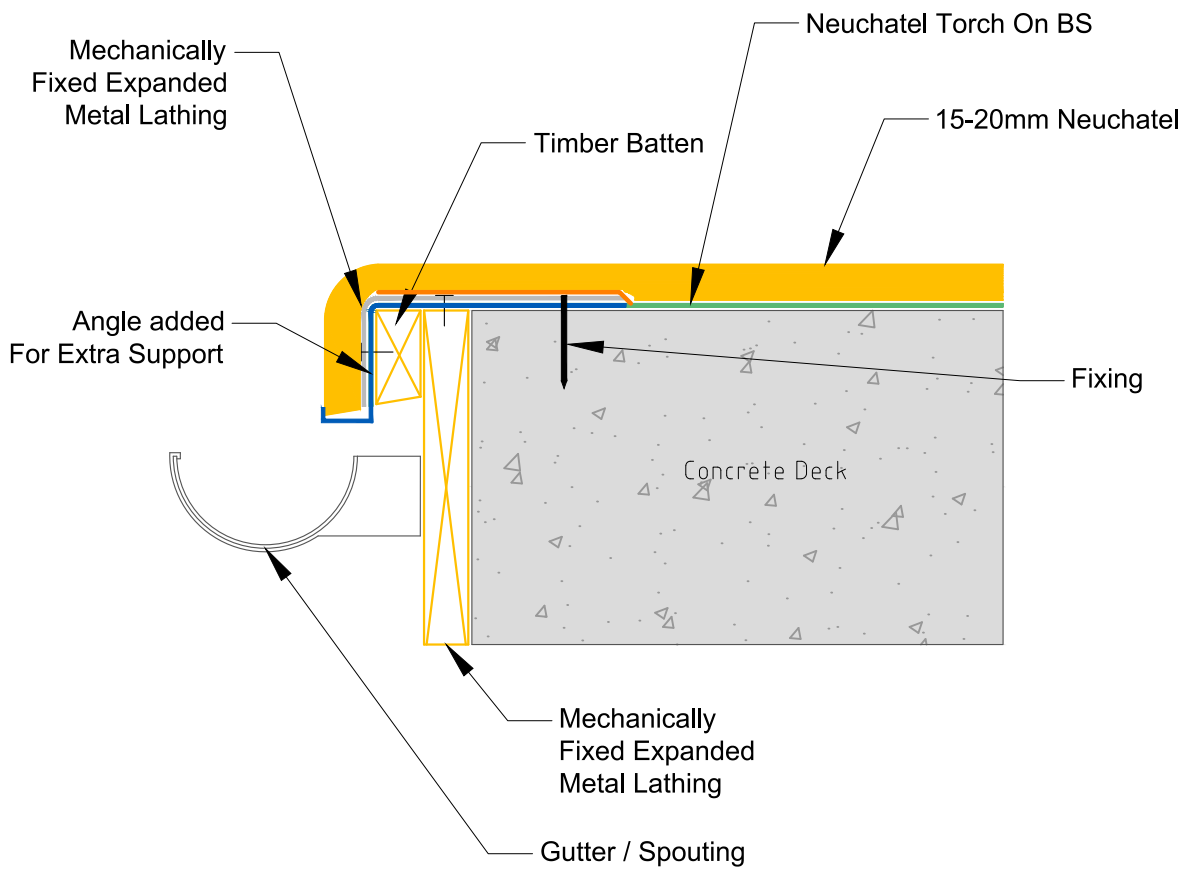
TECHNICAL SERVICES.  
Tel: 09 441 4595  
email: info@neuchatel.co.nz

Drawing: FBS 009B Rev1

OCT 2023

Not to Scale

Drawing is indicative only and subject to approval for use in the application required.



**masterspec**

TITLE: **GUTTER DRIP EDGE DETAIL  
STANDARD DETAIL**

**FULL BOND SYSTEM**

[www.neuchatel.co.nz](http://www.neuchatel.co.nz)

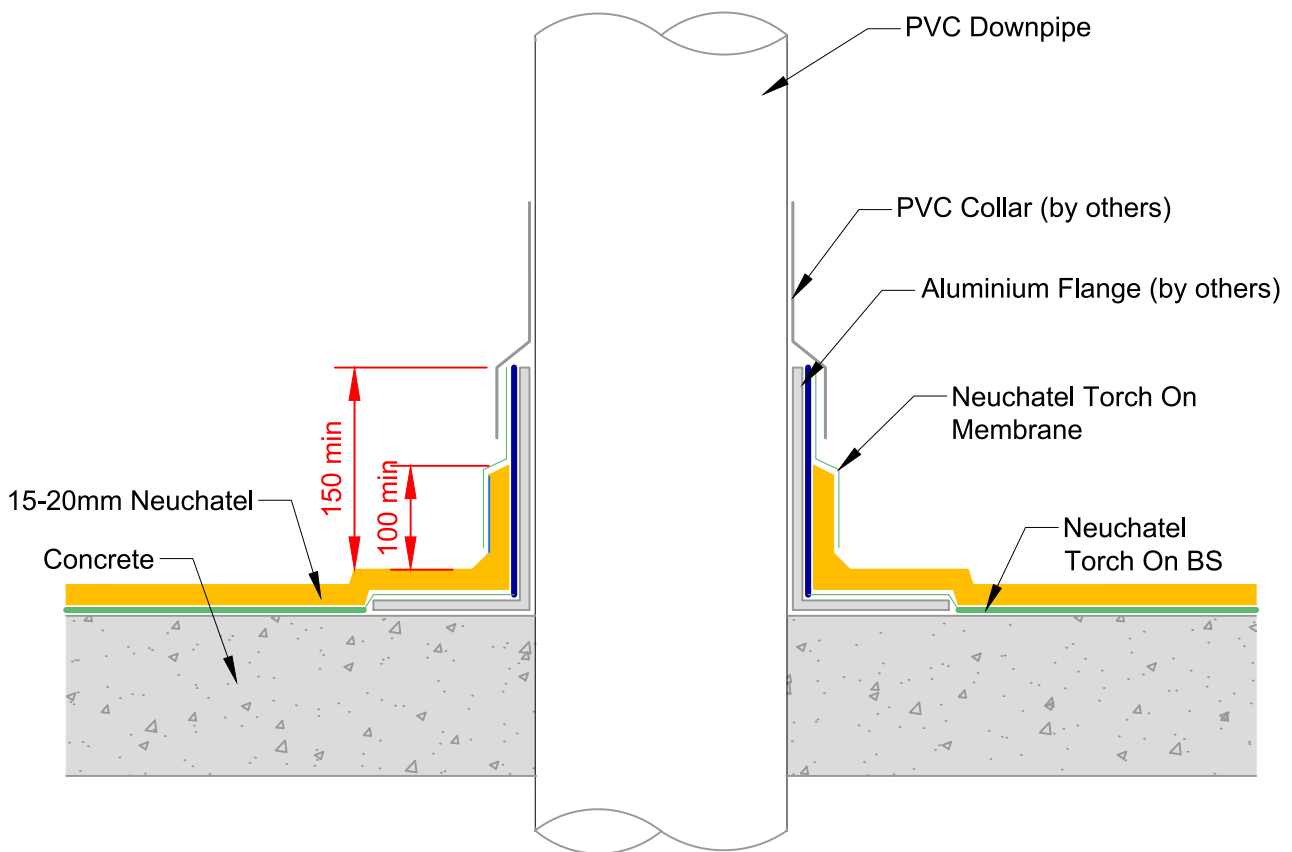
TECHNICAL SERVICES.  
Tel: 09 441 4595  
email: info@neuchatel.co.nz

Drawing: FBS 010 Rev1

OCT 2023

Not to Scale

Drawing is indicative only and subject to approval for use in the application required.



**masterspec**

TITLE: **DOWNPIPE PENETRATION  
STANDARD DETAIL**

**FULL BOND SYSTEM**

[www.neuchatel.co.nz](http://www.neuchatel.co.nz)

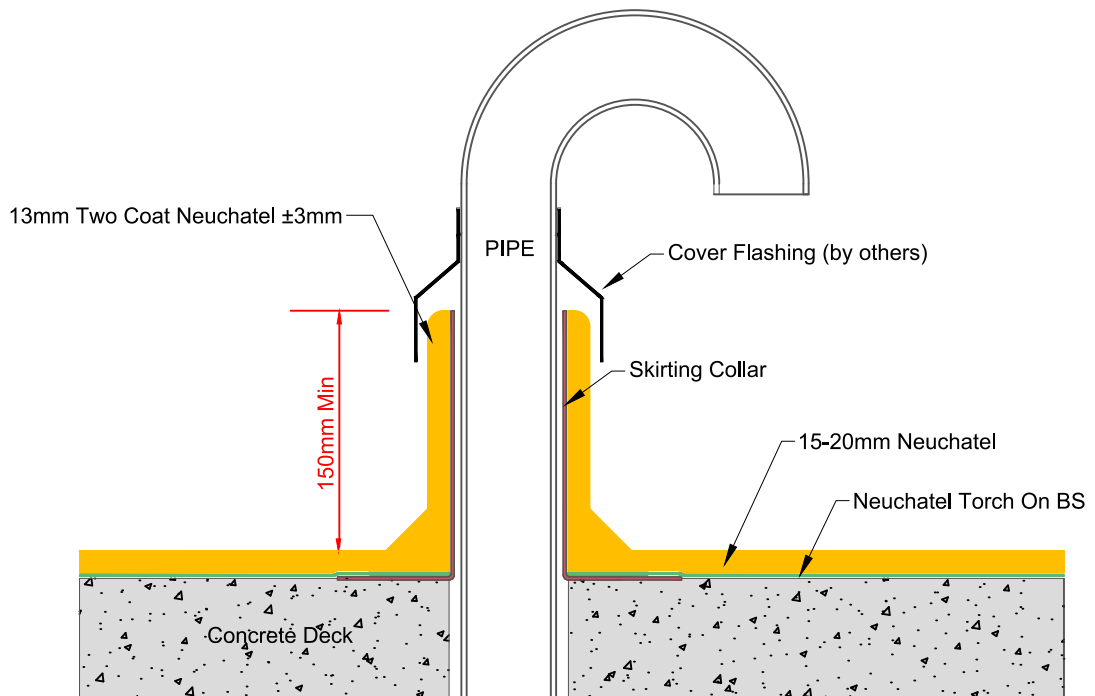
TECHNICAL SERVICES.  
Tel: 09 441 4595  
email: info@neuchatel.co.nz

Drawing: FBS 011 Rev1

OCT 2023

Not to Scale

Drawing is indicative only and subject to approval for use in the application required.



**masterspec**

TITLE: 'HOCKEY STICK' PIPE PENETRATION DETAIL  
STANDARD DETAIL

FULL BOND SYSTEM

[www.neuchatel.co.nz](http://www.neuchatel.co.nz)

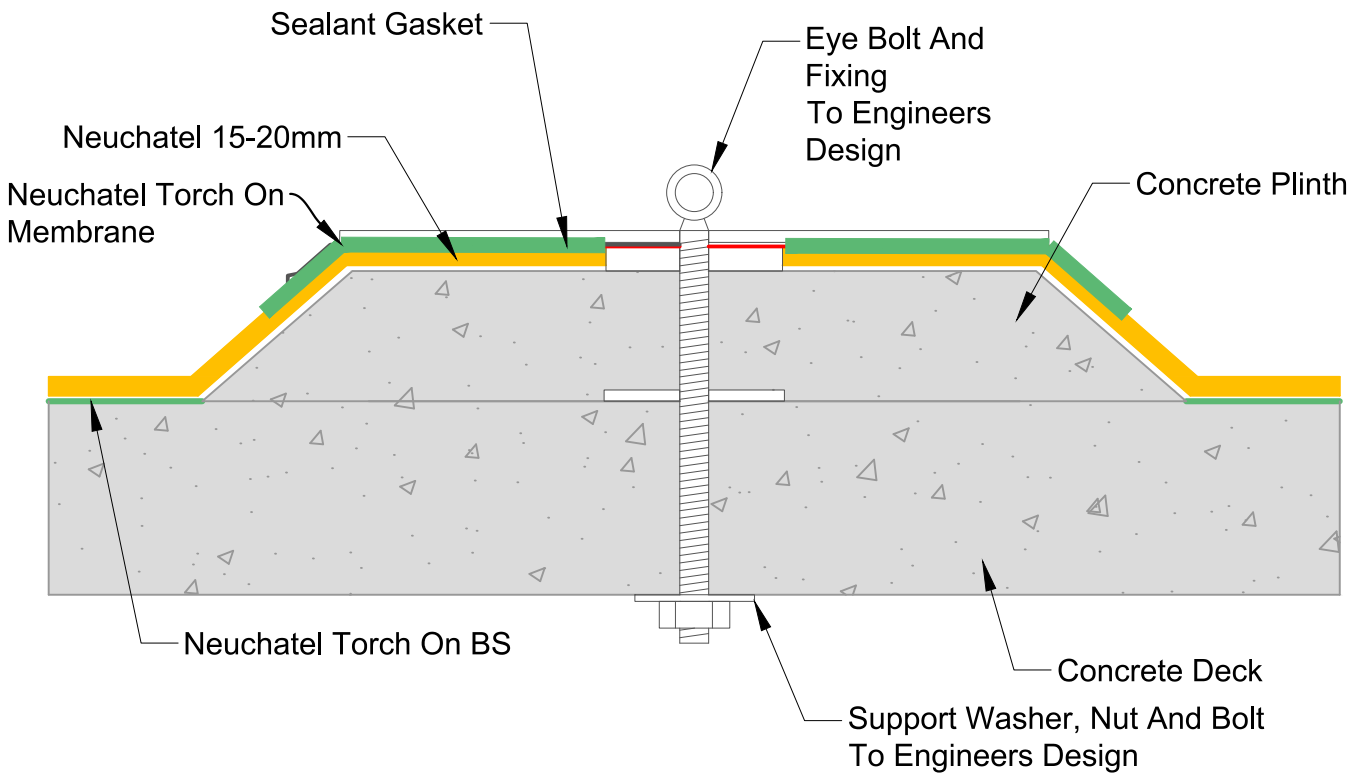
TECHNICAL SERVICES.  
Tel: 09 441 4595  
email: info@neuchatel.co.nz

Drawing: FBS 011B Rev1

OCT 2023

Not to Scale

Drawing is indicative only and subject to approval for use in the application required.



**masterspec**

TITLE: **FALL RESTRAINT PLINTH MOUNT DETAIL  
STANDARD DETAIL**

**FULL BOND SYSTEM**

[www.neuchatel.co.nz](http://www.neuchatel.co.nz)

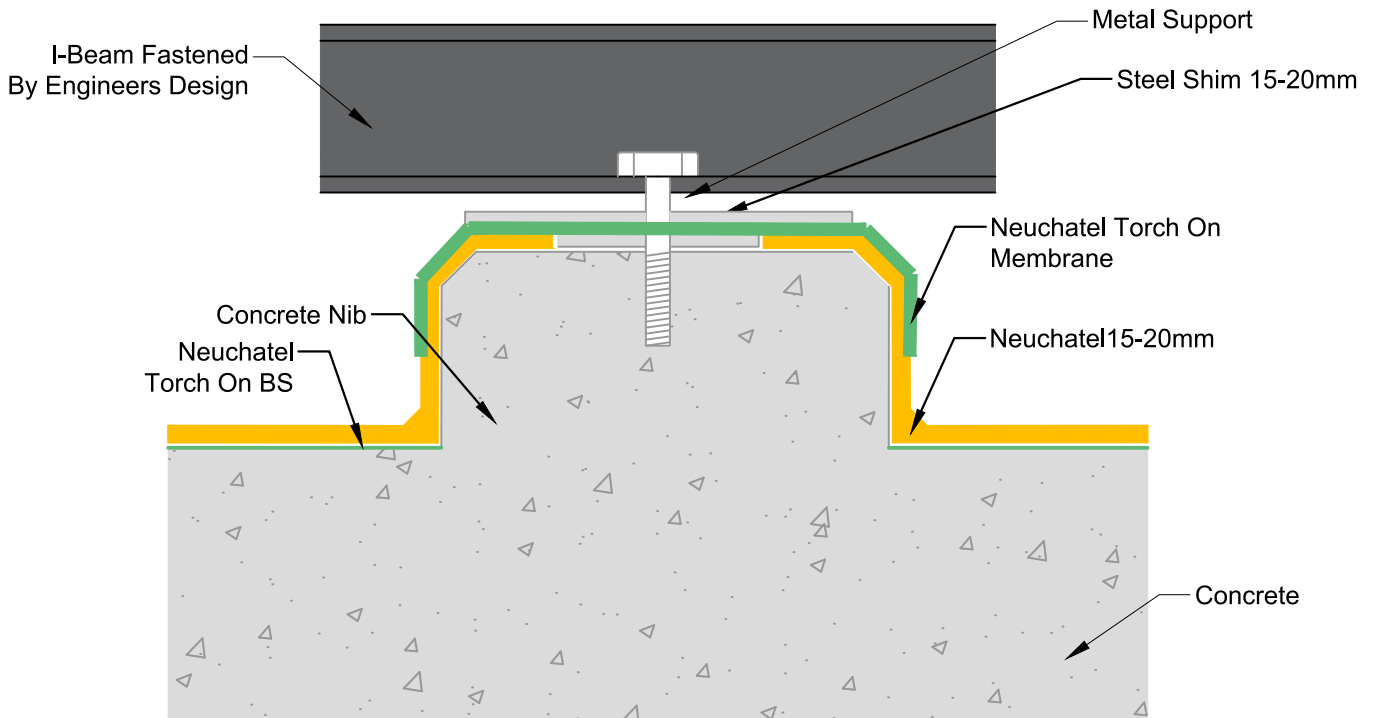
TECHNICAL SERVICES.  
Tel: 09 441 4595  
email: info@neuchatel.co.nz

Drawing: FBS 012 Rev1

OCT 2023

Not to Scale

Drawing is indicative only and subject to approval for use in the application required.



**masterspec**

TITLE: **PLANT ROOM PLINTH DETAIL  
STANDARD DETAIL**

**FULL BIND SYSTEM**

[www.neuchatel.co.nz](http://www.neuchatel.co.nz)

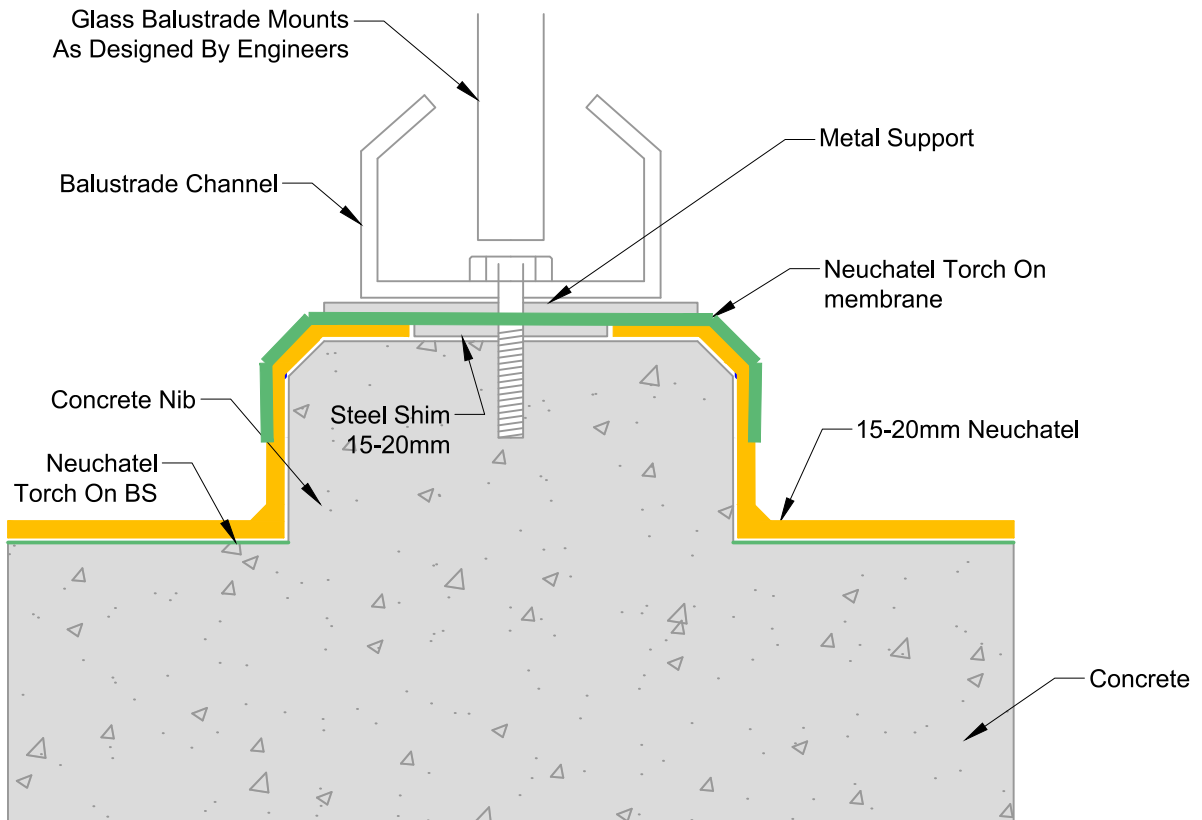
TECHNICAL SERVICES.  
Tel: 09 441 4595  
email: info@neuchatel.co.nz

Drawing: FBS 013 Rev1

OCT 2023

Not to Scale

Drawing is indicative only and subject to approval for use in the application required.



**masterspec**

TITLE: **TOP MOUNTED BALUSTRADE DETAIL  
STANDARD DETAIL**

**FULL BOND SYSTEM**

[www.neuchatel.co.nz](http://www.neuchatel.co.nz)

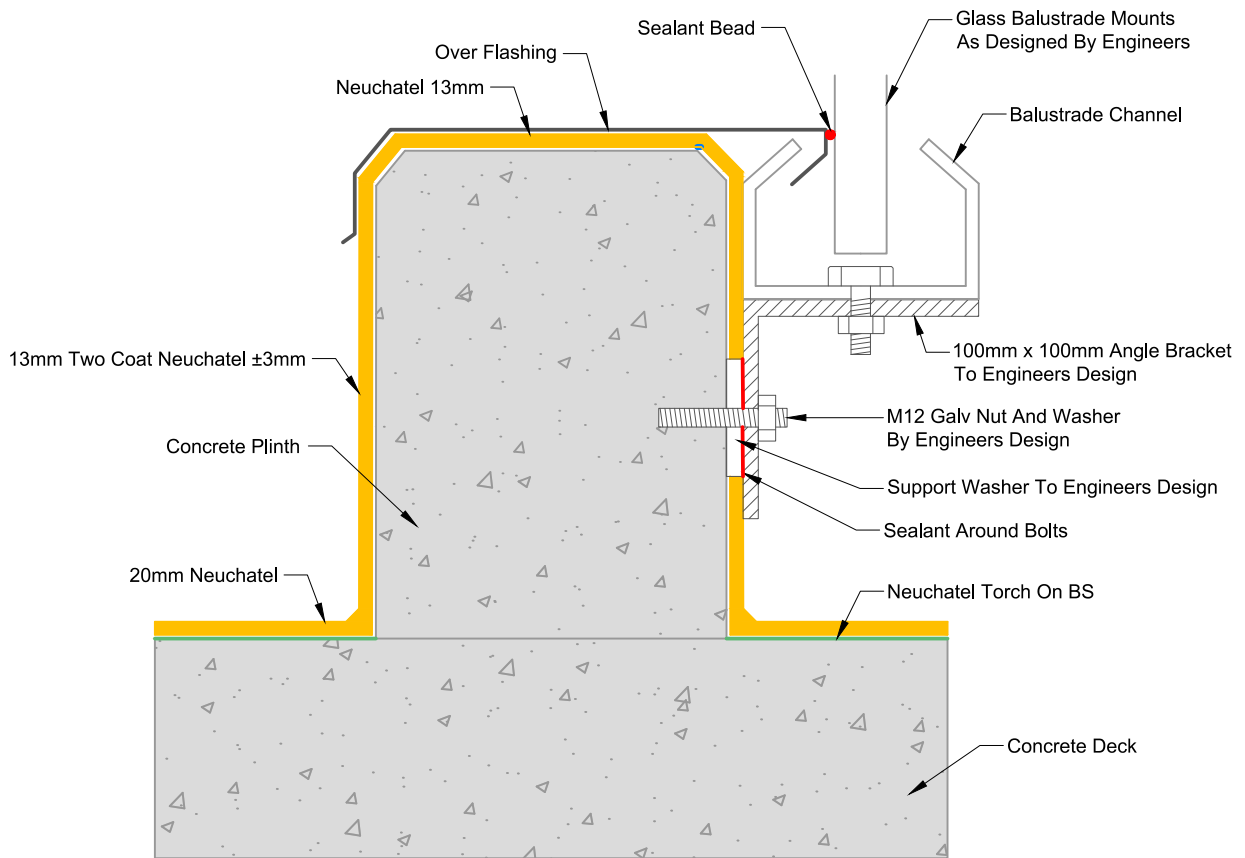
TECHNICAL SERVICES.  
Tel: 09 441 4595  
email: info@neuchatel.co.nz

Drawing: FBS 014 Rev1

OCT 2023

Not to Scale

Drawing is indicative only and subject to approval for use in the application required.



**masterspec**

TITLE: **SIDE MOUNTED BALUSTRADE DETAIL  
STANDARD DETAIL**

**FULL BOND SYSTEM**

[www.neuchatel.co.nz](http://www.neuchatel.co.nz)

TECHNICAL SERVICES.  
Tel: 09 441 4595  
email: info@neuchatel.co.nz

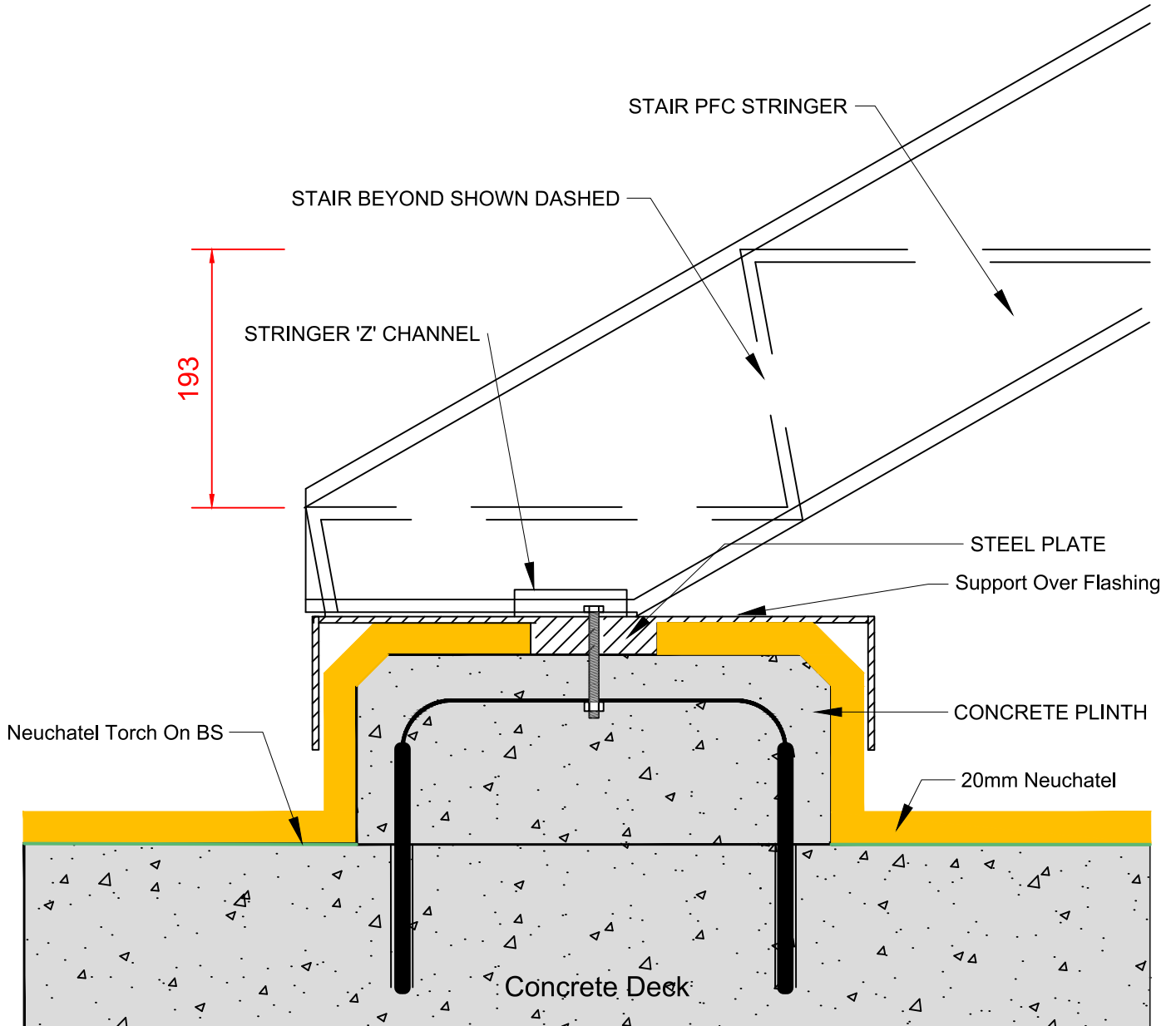
Drawing: FBS 014B Rev1

OCT 2023

Not to Scale

Drawing is indicative only and subject to approval for use in the application required.





**masterspec**

TITLE: **STAIR SUPPORT DETAIL  
STANDARD DETAIL**

**FULL BOND SYSTEM**

Drawing: FBS 015 Rev1

OCT 2023

Not to Scale

[www.neuchatel.co.nz](http://www.neuchatel.co.nz)

TECHNICAL SERVICES.  
Tel: 09 441 4595  
email: info@neuchatel.co.nz

Drawing is indicative only and subject to approval for use in the application required.